

This image is from the collection of

#ColorOurCollections



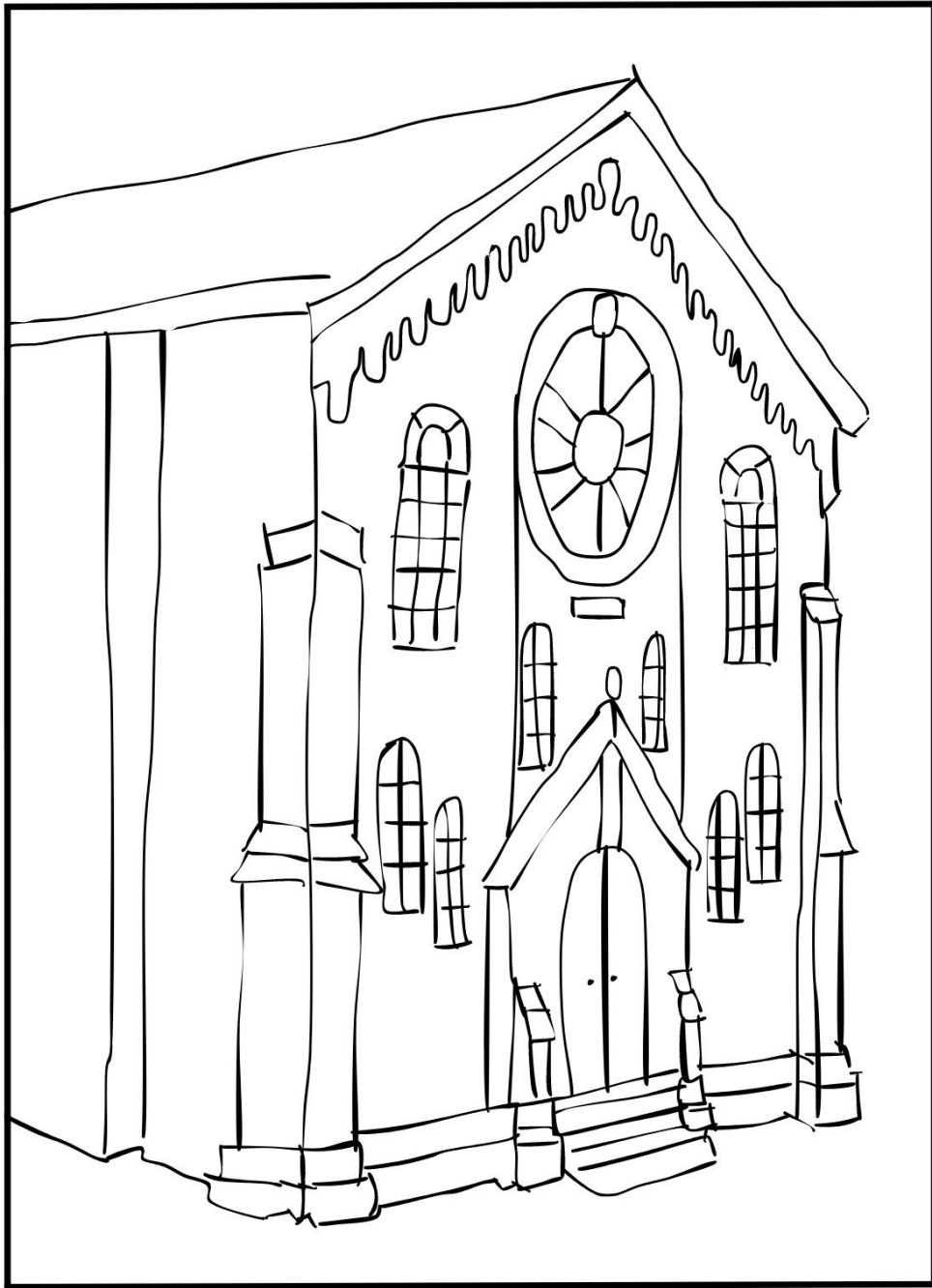
UNIVERSITY OF MARYLAND SCHOOL OF MEDICINE, DAVIDGE HALL

1814 - 1839

THE SITE WHERE HORACE HAYDEN GAVE THE FIRST DOCUMENTED DENTAL LECTURES IN THE U.S. AT A UNIVERSITY

Dr. Samuel D. Harris National Museum of Dentistry Baltimore College of Dental Surgery Collection, Baltimore, MD. (Image prepared for #ColorOurCollections by Katherine Ernest, 2024).

For more coloring pages, visit ColorOurCollections.org

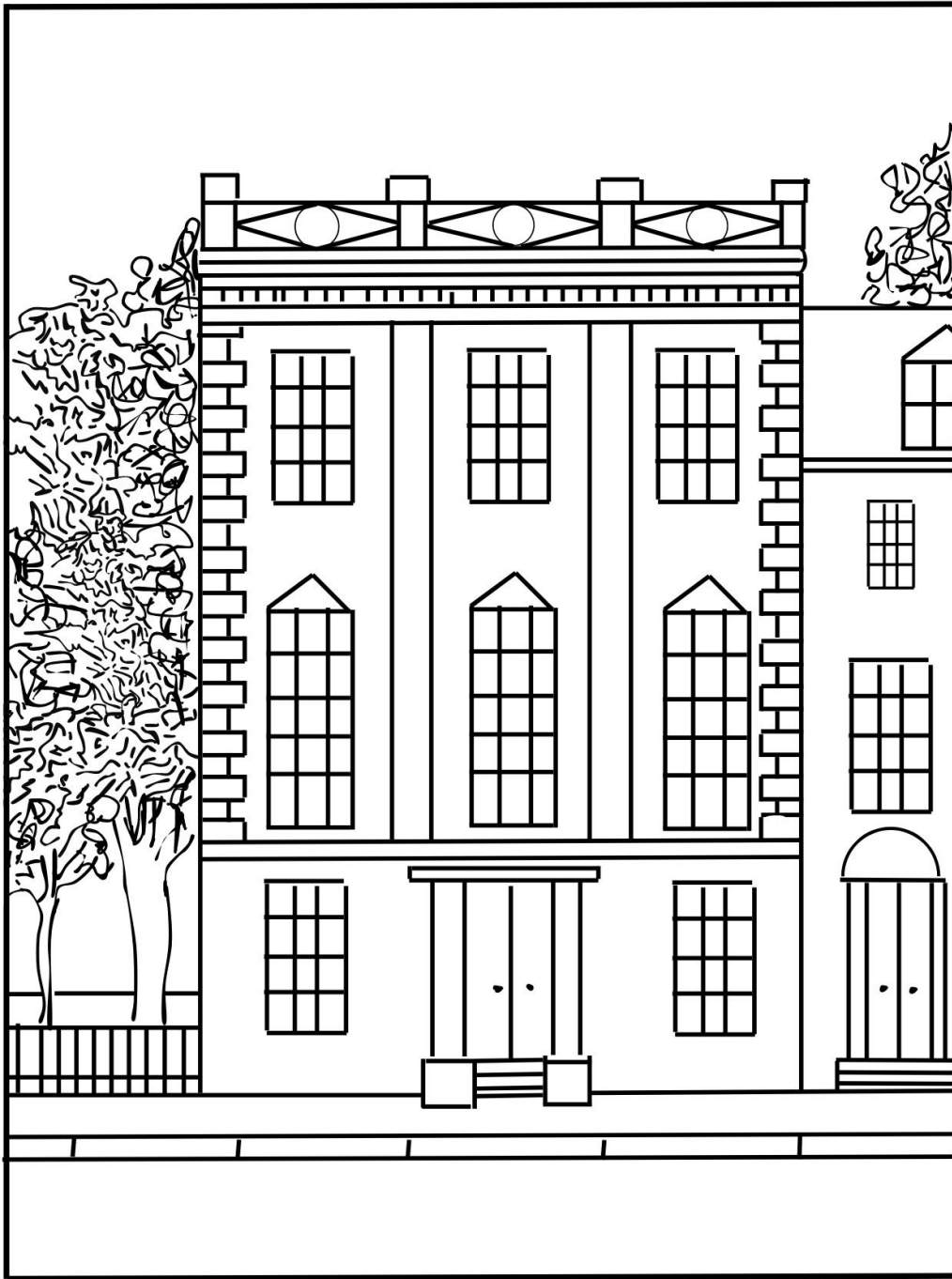


BAPTIST CHURCH, CALVERT STREET

1840

BALTIMORE COLLEGE OF DENTAL SURGERY 1ST LECTURES

Dr. Samuel D. Harris National Museum of Dentistry Baltimore College of Dental Surgery Collection, Baltimore, MD.
(Image prepared for #ColorOurCollections by Katherine Ernest, 2024).

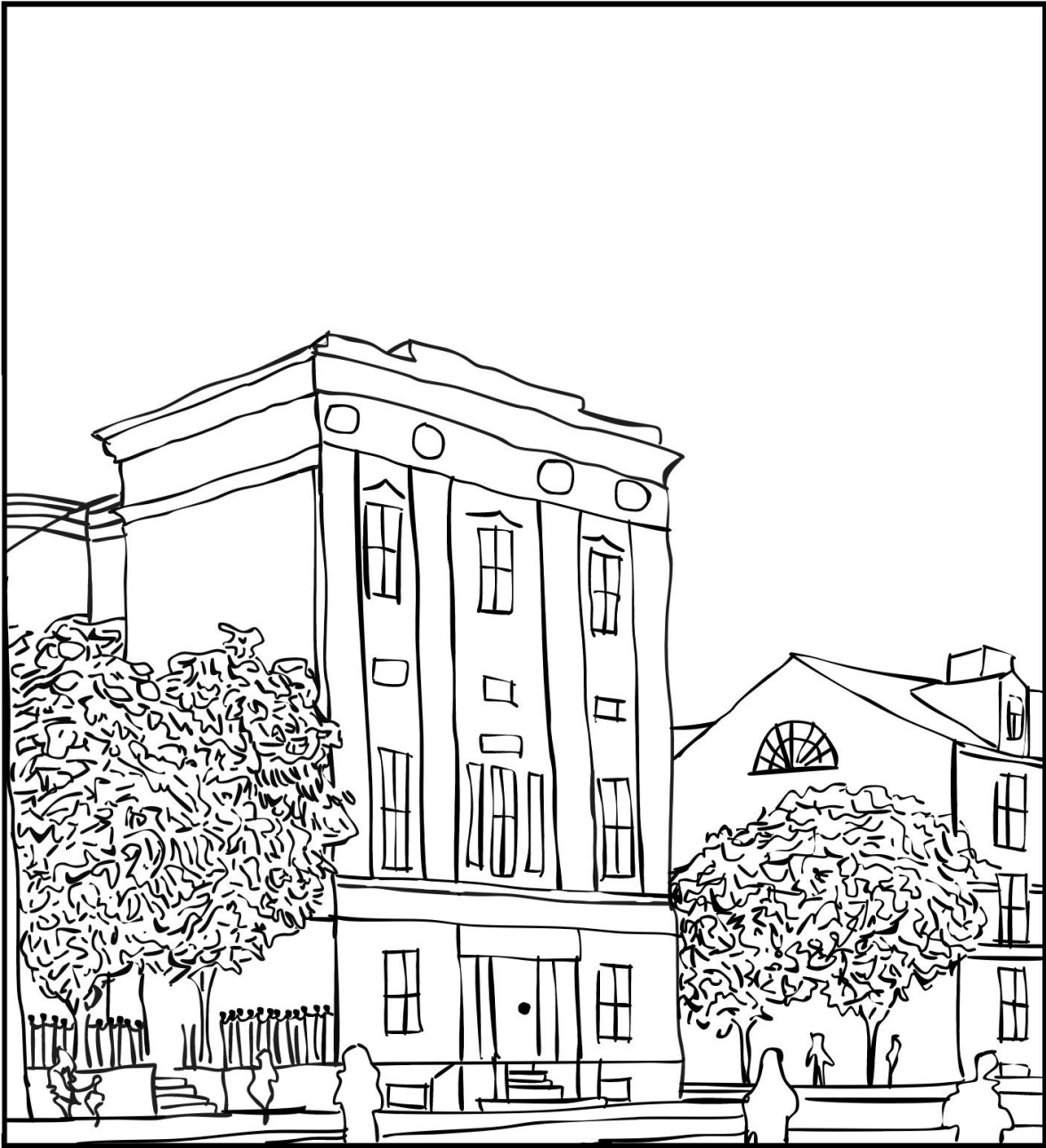


BALTIMORE COLLEGE OF DENTAL SURGERY

1840 - 1845

SOUTH SHARP STREET

Dr. Samuel D. Harris National Museum of Dentistry Baltimore College of Dental Surgery Collection, Baltimore, MD.
(Image prepared for #ColorOurCollections by Katherine Ernest, 2024).



BALTIMORE COLLEGE OF DENTAL SURGERY

1845 - 1853

LEXINGTON STREET NEAR CALVERT

Dr. Samuel D. Harris National Museum of Dentistry Baltimore College of Dental Surgery Collection, Baltimore, MD.
(Image prepared for #ColorOurCollections by Katherine Ernest, 2024).

This image is from the collection of

#ColorOurCollections



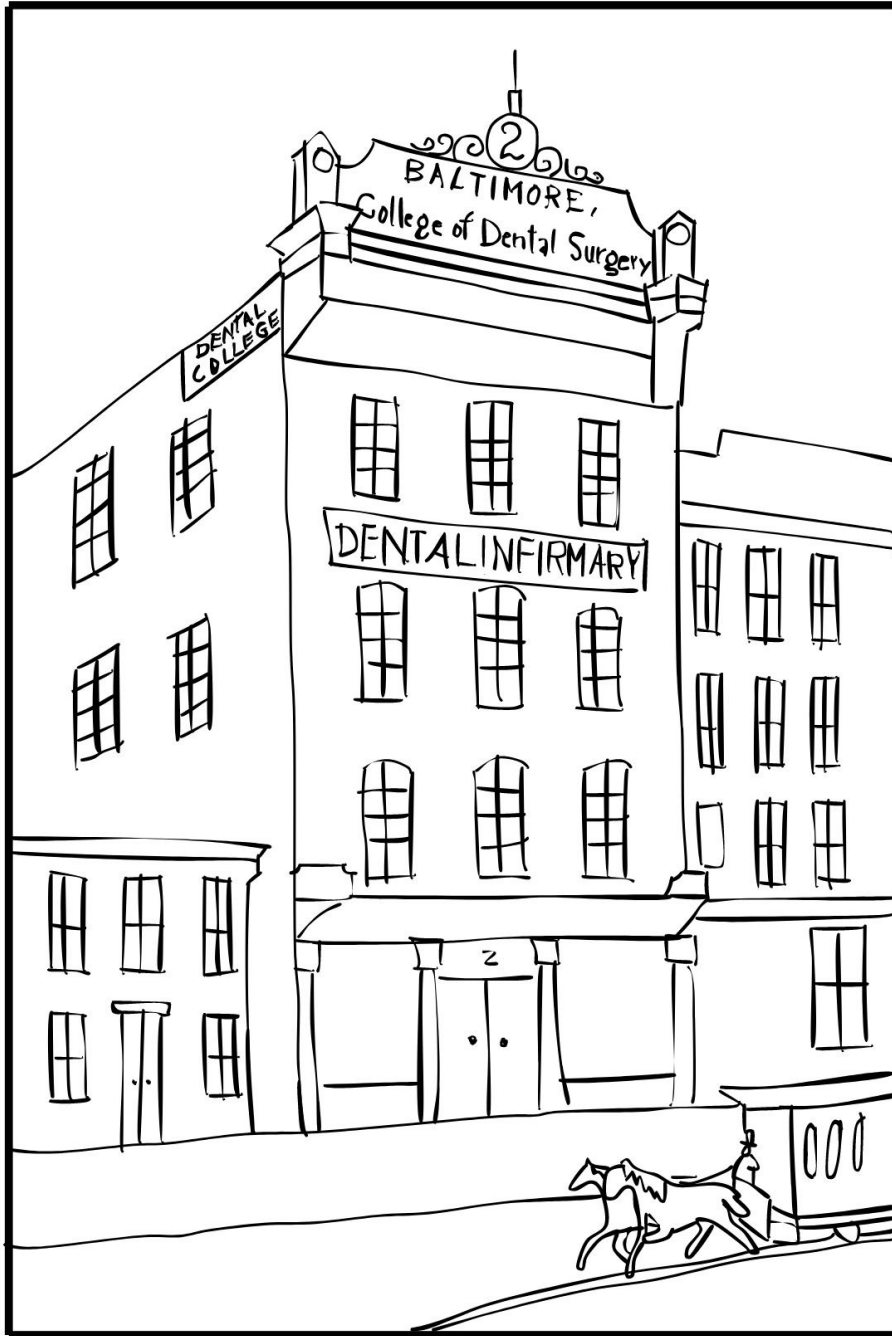
BALTIMORE COLLEGE OF DENTAL SURGERY

1853 - 1872

N. E. CORNER HANOVER & LOMBARD STREETS

Dr. Samuel D. Harris National Museum of Dentistry Baltimore College of Dental Surgery Collection, Baltimore, MD. (Image prepared for #ColorOurCollections by Katherine Ernest, 2024).

For more coloring pages, visit [ColorOurCollections.org](https://www.ColorOurCollections.org)

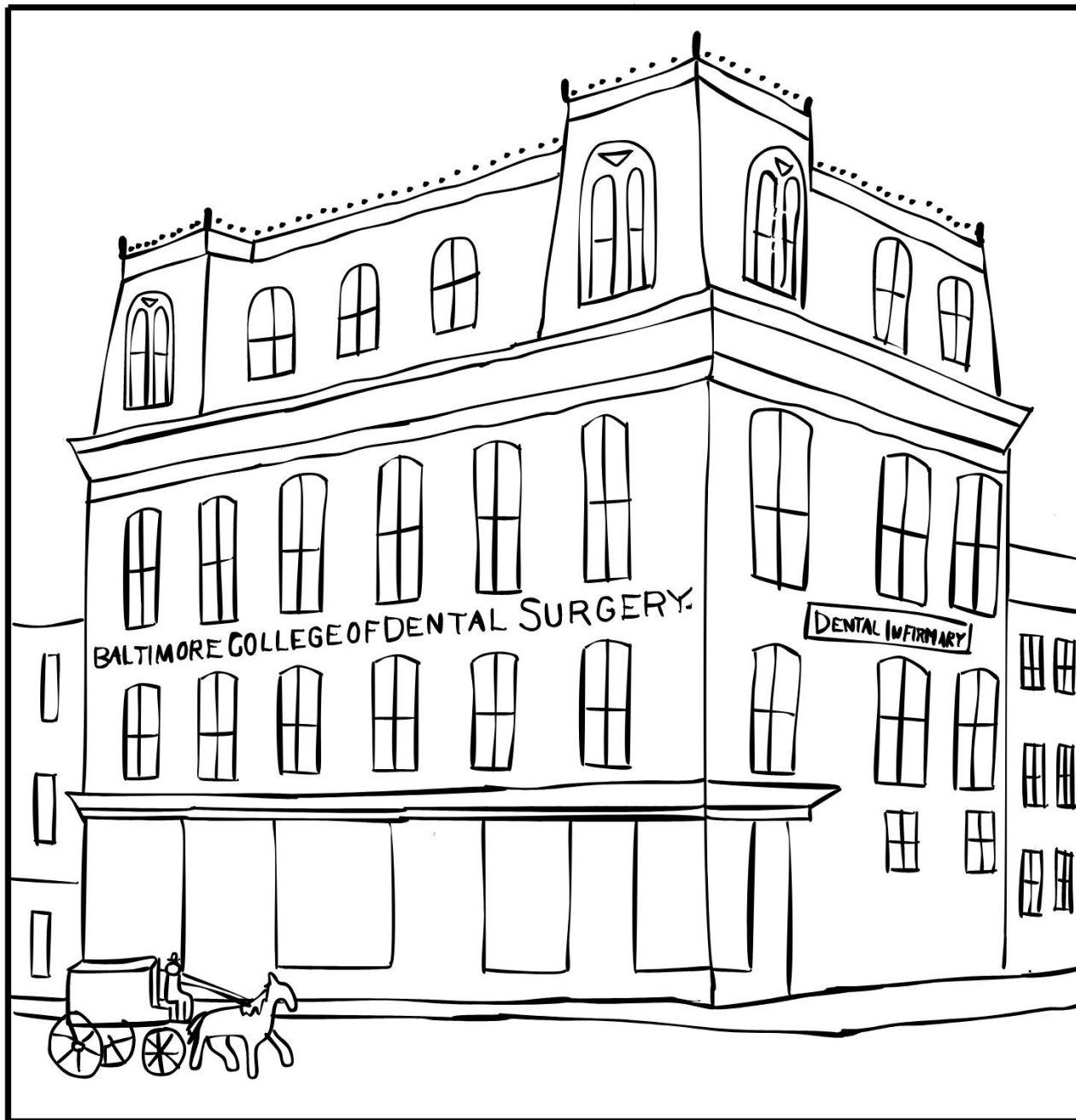


BALTIMORE COLLEGE OF DENTAL SURGERY

1872 - 1875

NOS. 2 & 4 N. GREENE STREET

Dr. Samuel D. Harris National Museum of Dentistry Baltimore College of Dental Surgery Collection, Baltimore, MD.
(Image prepared for #ColorOurCollections by Katherine Ernest, 2024).

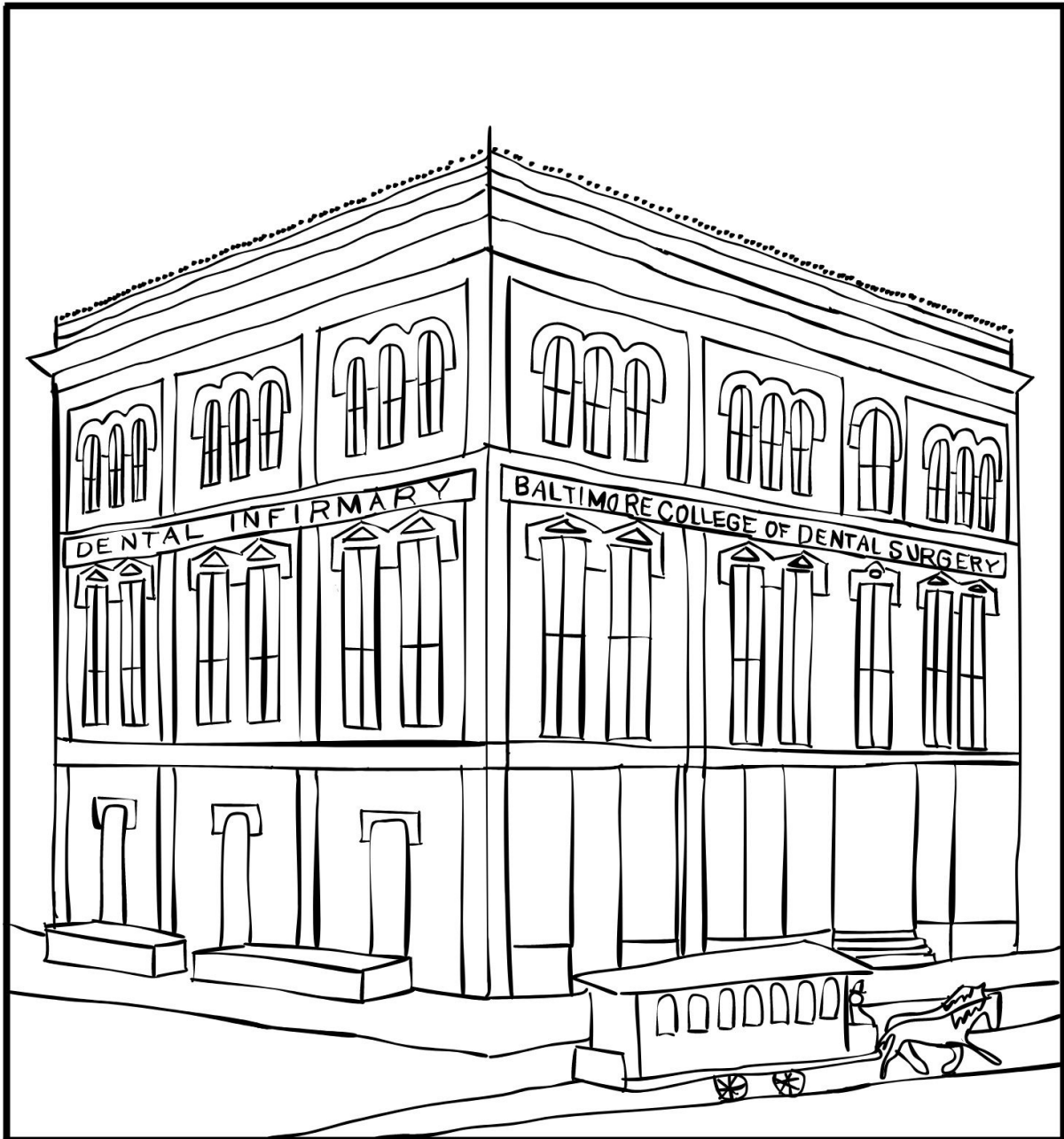


BALTIMORE COLLEGE OF DENTAL SURGERY

1875 - 1881

S. E. CORNER EUTAW & LEXINGTON STREETS

Dr. Samuel D. Harris National Museum of Dentistry Baltimore College of Dental Surgery Collection, Baltimore, MD.
(Image prepared for #ColorOurCollections by Katherine Ernest, 2024).



BALTIMORE COLLEGE OF DENTAL SURGERY

1881 - 1914

CORNER OF EUTAW & FRANKLIN STREETS

Dr. Samuel D. Harris National Museum of Dentistry Baltimore College of Dental Surgery Collection, Baltimore, MD.
(Image prepared for #ColorOurCollections by Katherine Ernest, 2024).



UNIVERSITY OF MARYLAND, DENTAL DEPARTMENT

1882 - 1904

N. E. CORNER LOMBARD & GREENE STREETS

Dr. Samuel D. Harris National Museum of Dentistry Baltimore College of Dental Surgery Collection, Baltimore, MD.
(Image prepared for #ColorOurCollections by Katherine Ernest, 2024).



BALTIMORE COLLEGE OF DENTAL SURGERY, DENTAL SCHOOL,
UNIVERSITY OF MARYLAND

1914 - 1924

851 N. HOWARD STREET

Dr. Samuel D. Harris National Museum of Dentistry Baltimore College of Dental Surgery Collection, Baltimore, MD.
(Image prepared for #ColorOurCollections by Patrick Cutter, 2024).



UNIVERSITY OF MARYLAND, DENTAL DEPARTMENT 1904 - 1923

BALTIMORE COLLEGE OF DENTAL SURGERY & UNIVERSITY OF
MARYLAND, DENTAL DEPARTMENT MERGED 1923

BALTIMORE COLLEGE OF DENTAL SURGERY, DENTAL SCHOOL,
UNIVERSITY OF MARYLAND 1924 - 1929

31 SOUTH GREENE STREET

Dr. Samuel D. Harris National Museum of Dentistry Baltimore College of Dental Surgery Collection, Baltimore, MD.
(Image prepared for #ColorOurCollections by Patrick Cutter, 2024).



BALTIMORE COLLEGE OF DENTAL SURGERY, DENTAL SCHOOL,
UNIVERSITY OF MARYLAND

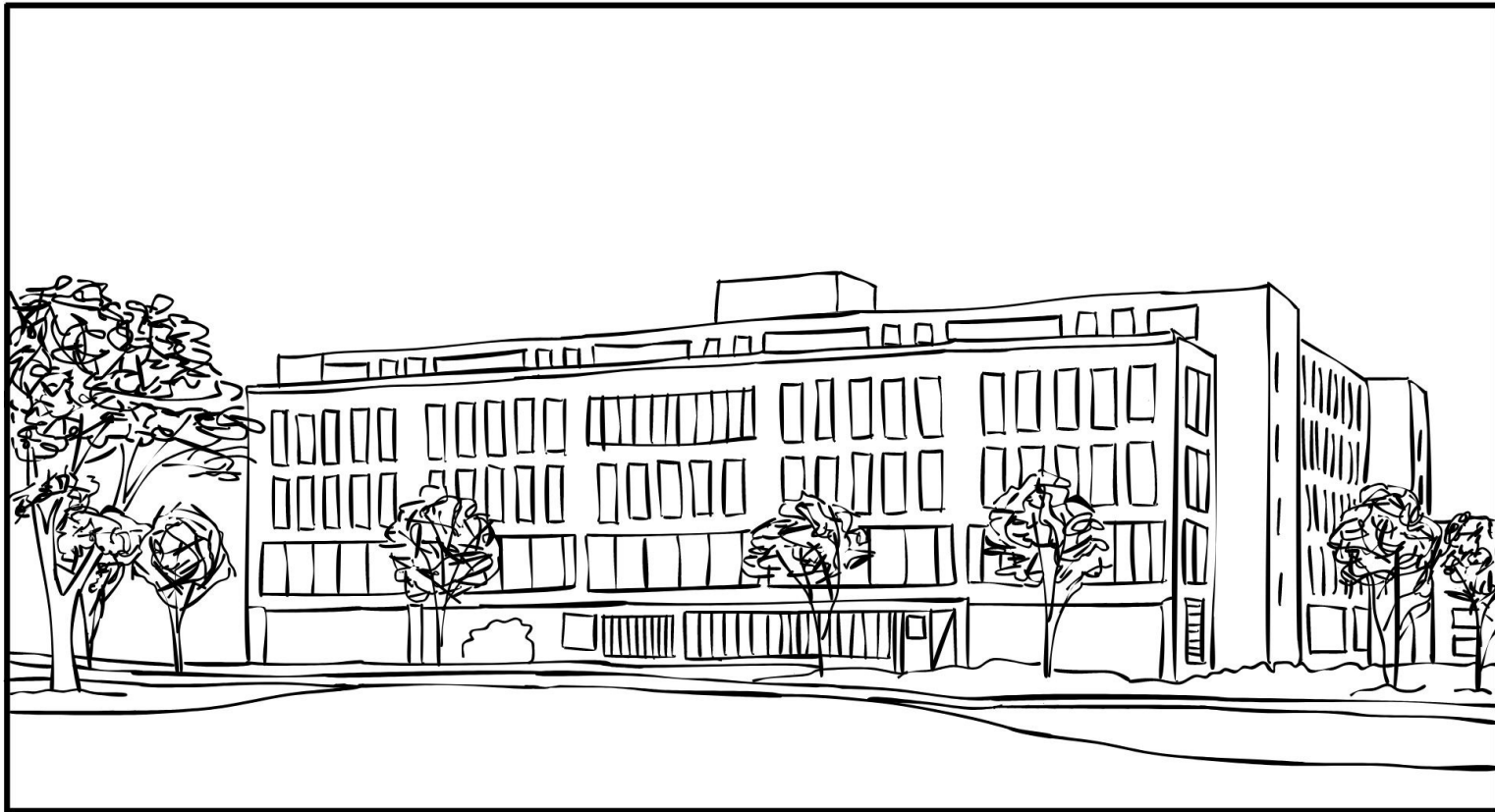
1929 - 1969

N. W. CORNER LOMBARD AND GREENE STREETS

Dr. Samuel D. Harris National Museum of Dentistry Baltimore College of Dental Surgery Collection, Baltimore, MD.
(Image prepared for #ColorOurCollections by Katherine Ernest, 2024).

This image is from the collection of

#ColorOurCollections



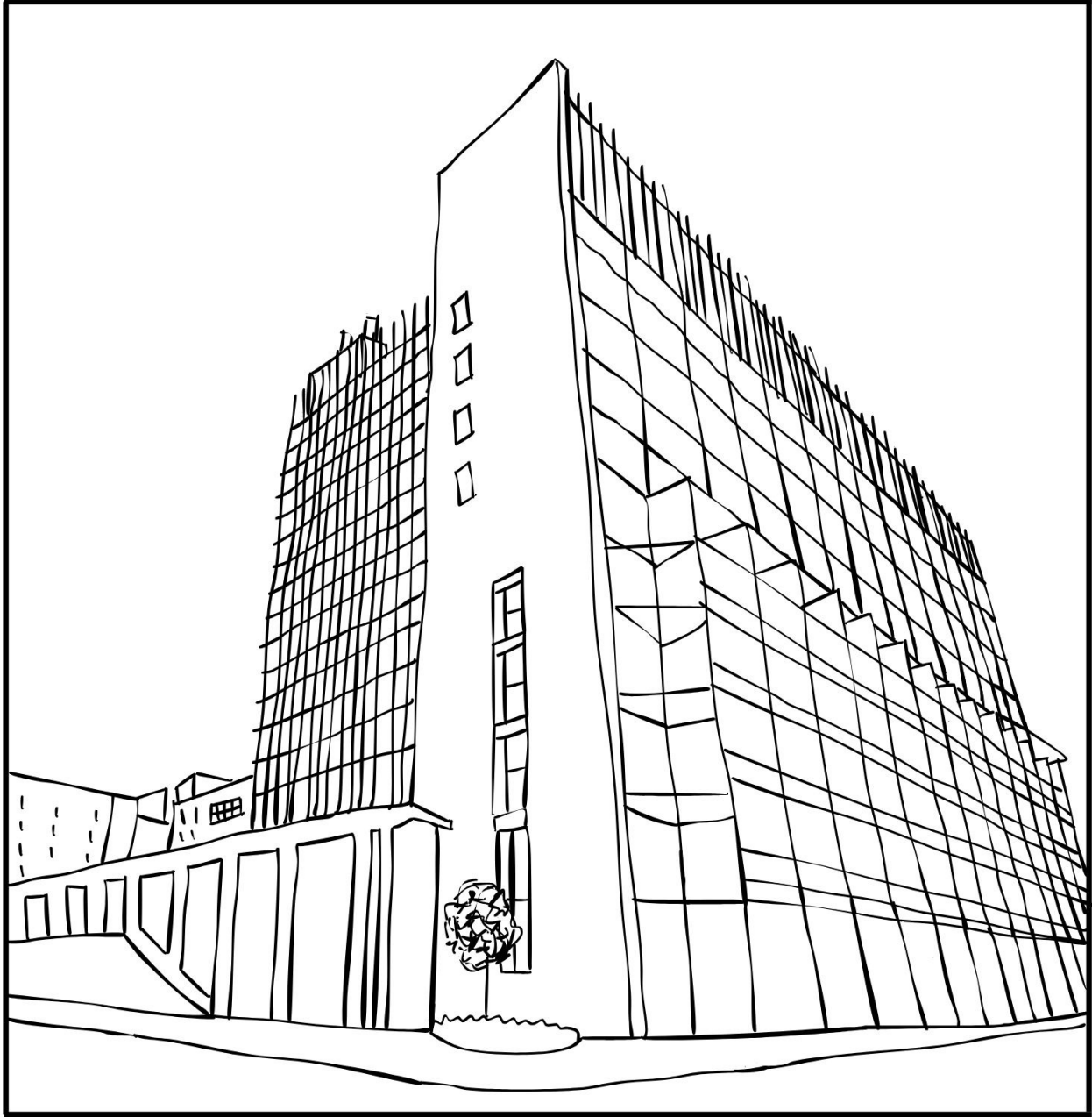
BALTIMORE COLLEGE OF DENTAL SURGERY, DENTAL SCHOOL, UNIVERSITY OF MARYLAND

1969 - 2006

666 WEST BALTIMORE STREET

Dr. Samuel D. Harris National Museum of Dentistry Baltimore College of Dental Surgery Collection, Baltimore, MD. (Image prepared for #ColorOurCollections by Katherine Ernest, 2024).

For more coloring pages, visit ColorOurCollections.org



UNIVERSITY OF MARYLAND SCHOOL OF DENTISTRY

2006 -

650 WEST BALTIMORE STREET

University of Maryland School of Dentistry, "Catalog 2023-2024." Catalog 2023-2024, 2024, <https://dental-umaryland.smartcatalogiq.com/en/2023-2024/catalog/>. (Image prepared for #ColorOurCollections by Katherine Ernest, 2024).